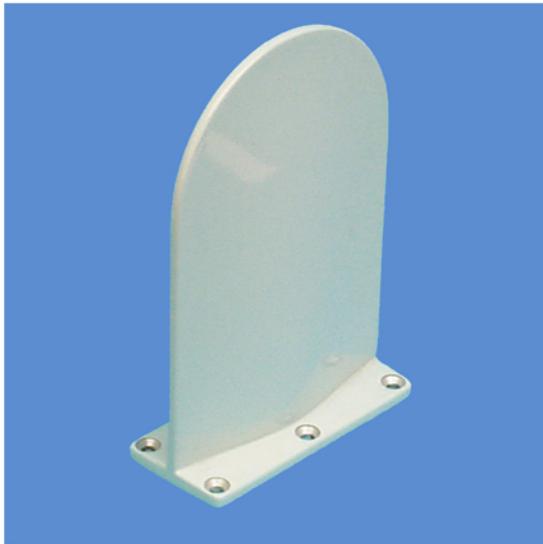


Glide Slope S41422



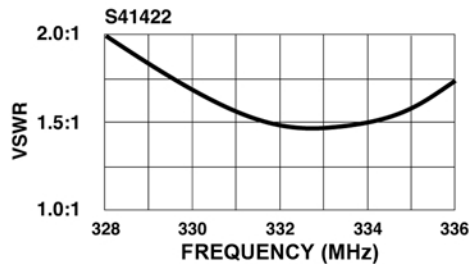
DESCRIPTION

S41422: High-gain, dual-port Glide Slope antenna with built-in fault isolation network. Fiberglass radome bonded over alloy casting provides high structural strength. Type 'C' connectors. Hermetically-sealed for long service life. Interchangeable with other Glide Slopes, simplifying spares replacement. Certified for Category III aircraft. Interchangeable with Collins 37P-5.

NSN: 5985-01-424-4934

FEDERAL & MILITARY SPECS: TSO-C34e, ETSO-2C34f, MIL-E-5400H, MIL-E-5272C, ARINC Characteristic 519, BAC Specs D10-3064 & D6-10853, MIL-STD-810, DO-192.

PERFORMANCE



SPECIFICATIONS	
MODELS	S41422
ELECTRICAL	
Frequency	328.6 to 335.4 MHz
VSWR	≤2.0:1
Patterns	Cosinusoidal in E & H Planes
Polarization	Linear (horizontal)
Impedance	50 ohms nominal
Cross Polarization	≥ 10 dB below primary polarization
MECHANICAL	
Weight	0.6 lb. (Max)
Length	6.90 in.
Width	4.60 in.
Thickness	2.00 in.
Material	A356-T51 Casting/Epoxy Fiberglass
Finish	Skydrol-Resistant Polyurethane Enamel
Connector	C Female
ENVIRONMENTAL	
Temperature	-55°C (-67°F) to +74°C (165°F)
Vibration	4.86 G RMS
Altitude	50,000 ft

